

# **PUBLIC HEARING NOTICE**

**City of Granite Falls**

**August 23, 2017**

**7:00 p.m.**

## **BEFORE THE GRANITE FALLS HEARING EXAMINER**

\*\*\*\*\*

NOTICE IS HEREBY GIVEN THAT in the Granite Falls City Hall Council Chambers at 206 S Granite Avenue, Granite Falls, WA on Wednesday, the 23rd day of August 2017, at 7:00 p.m., a public hearing for consideration of a proposal to establish a residential condominium development consisting of 76 single-family detached units and 20 attached units in five 4-plex structures on 8.41 acre site zoned MR (Multiple Residential) located at 17920 100<sup>th</sup> Street NE, Granite Falls, Washington.

Any person may appear at the hearing and may be heard in support of or in opposition to this proposal. If you are unable to attend the public hearing in person, you may submit your written comments by 4:00 p.m., August 23, 2017, to the attention of the City Clerk at Granite Falls City Hall, 206 S Granite Avenue, Granite Falls, WA, 98252, in order for your comments to be considered as part of the formal record. Additional information may be obtained at City Hall from 8:30 a.m. to 5:00 p.m. by calling 360-691-6441.

**GRANITE FALLS HEARING EXAMINER**

  
\_\_\_\_\_  
Darla Reese, City Clerk

Dated this 11th day of August, 2017.

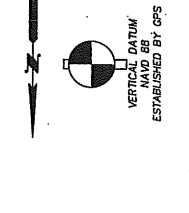
The City of Granite Falls strives to provide access and services to all members of the public. Please notify the City at least one week prior to the event if reasonable accommodations are needed.

**Notice – All Proceedings of this meeting are sound recorded**

A PORTION OF THE NW 1/4, OF THE SW 1/4, SECTION 13, TOWNSHIP 30 NORTH, RANGE 6 EAST, W.M.

SHEET INDEX table listing various plan types and their corresponding sheet numbers.

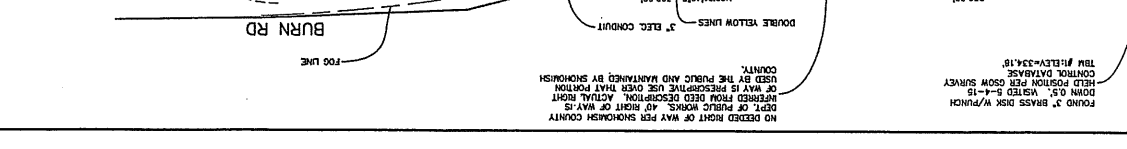
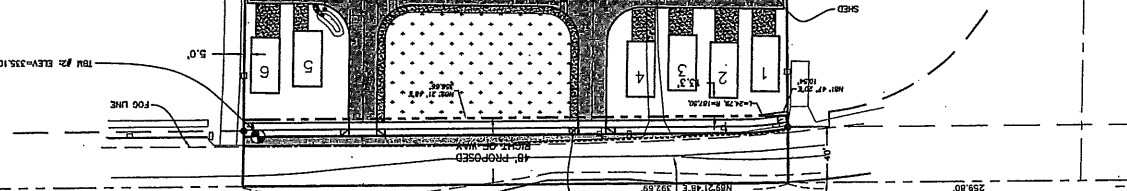
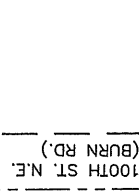
FIELD DATA table listing corner coordinates, elevations, and monument details.



BUILDING-DETAIL table with scale 1" = 20', showing unit dimensions for various building phases.

BUILDING-DETAIL table with scale 1" = 20', showing unit dimensions for various building phases.

BUILDING-DETAIL table with scale 1" = 20', showing unit dimensions for various building phases.



LEGEND section listing symbols for various utilities and site features such as water valves, gas valves, manholes, and fire hydrants.

LEGAL DESCRIPTION section providing a detailed survey-based description of the property boundaries and easements.

OWNER information: MARSH & ASSOCIATES, 1205 BANVILLE AVE, SUITE D, SHONOHUSH, WA 98288.

APPLICANT information: SANDS REDEVELOPMENT, INC., 125 EAST MAIN ST., STE. 104, SHONOHUSH, WA 98288.

ENGINEER information: HARVARD ASSOCIATES, INC., 125 EAST MAIN ST., STE. 104, SHONOHUSH, WA 98288.

SURVEYOR information: BURNS & MCDONNELL, INC., 125 EAST MAIN ST., STE. 104, SHONOHUSH, WA 98288.

CONTACT information: ANDREW S. LOCUSTO, 125 EAST MAIN ST., STE. 104, SHONOHUSH, WA 98288.

PROJECT NOTES section detailing construction requirements and site constraints.

SITE DATA section providing details on zoning, area calculations, and parking requirements.

CONTRACT section with information regarding the approved construction permit.

DATE field for recording the approval date.

RECEIVED stamp dated AUG 08 2017.

City of Granite Falls logo and name.

City of Granite Falls logo and name.

City of Granite Falls logo and name.

City of Granite Falls logo and name.

City of Granite Falls logo and name.

City of Granite Falls logo and name.

City of Granite Falls logo and name.

City of Granite Falls logo and name.